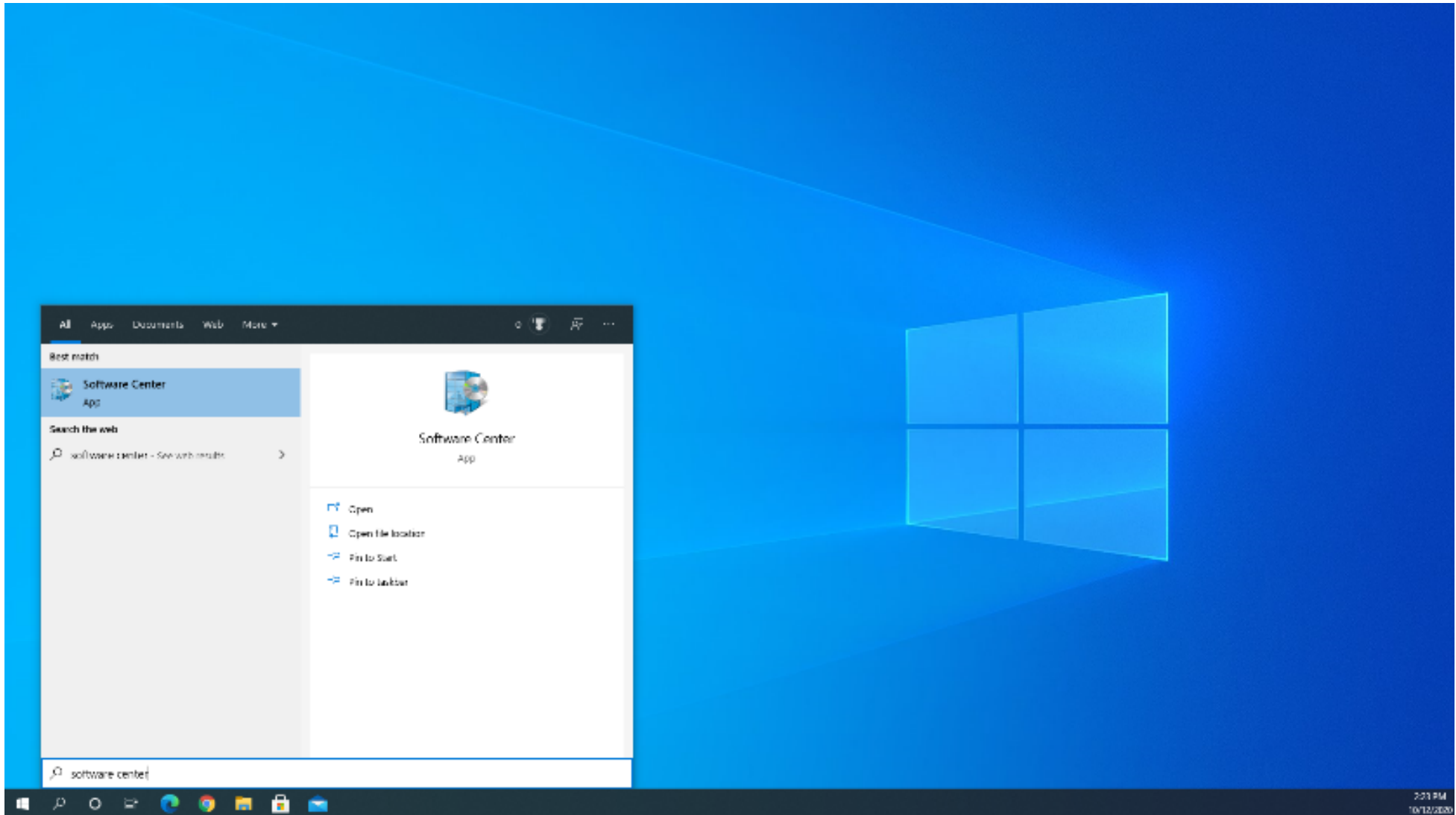


SCCM Instructions for Installing Software

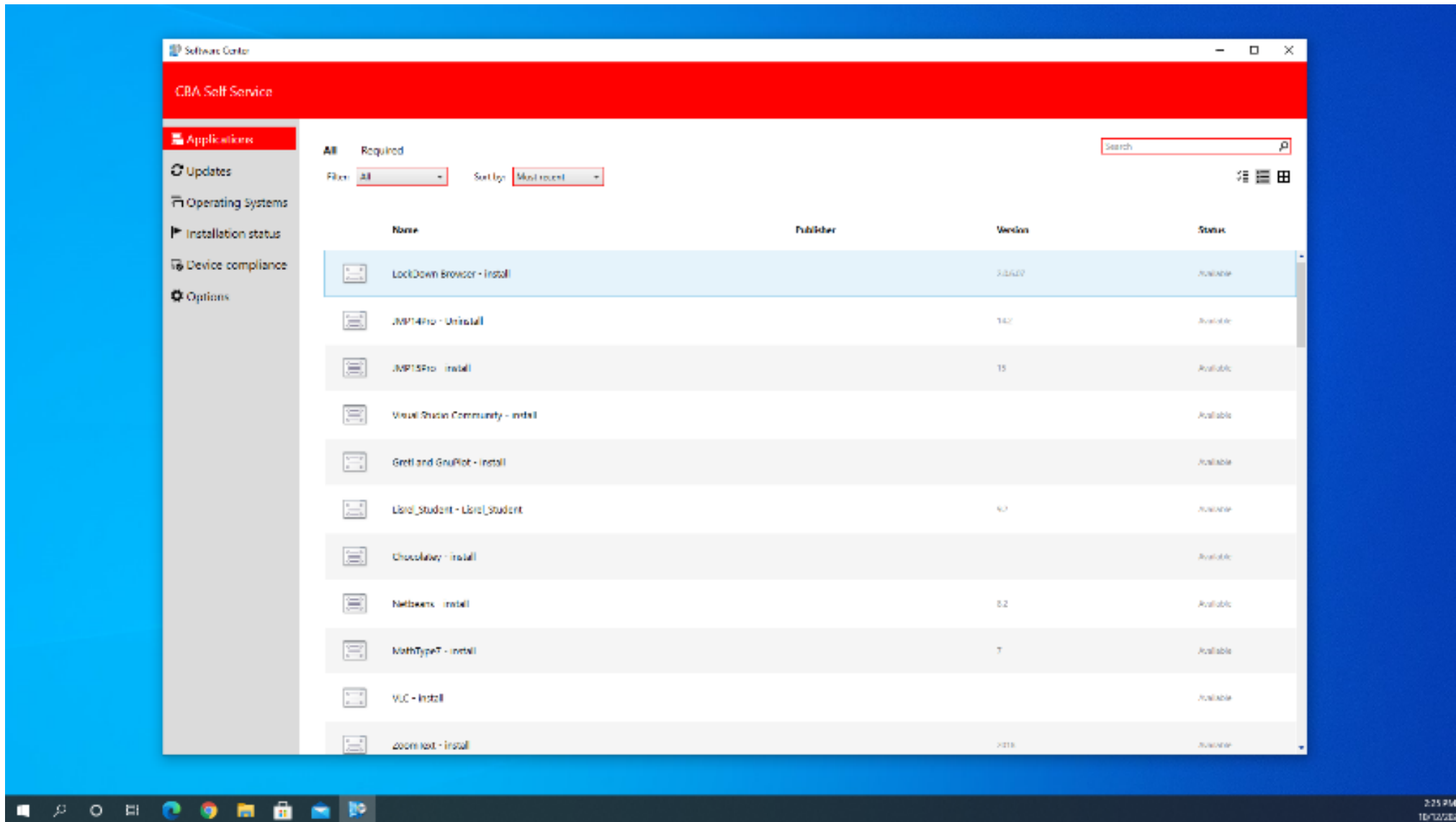
1. Make sure you are connected to the UA domain via a hardwired ethernet cable or UA VPN
 - a. If you have trouble with this, contact The Culverhouse Technology Group at (205) 348-6841 or helpdesk@culverhouse.ua.edu
2. Click the Windows Start button or in the “Type here to search” bar and type in “Software Center”
3. Press ENTER or click on “Software Center” (Pictured Below)



4. Once Software Center opens, navigate to the Applications tab and select the program you would like to install from the list. ***If the program isn't listed, contact Culverhouse Technology Group***

SCCM Instructions for Installing Software

- Once the program is selected, an install button should appear. Click this and the software should install to your machine.



SCCM Instructions for Installing Software

The screenshot displays the Windows Software Center interface. At the top, the title bar reads 'Software Center' with standard window controls. Below the title bar is a red header with the text 'CBA Self Service'. A left-hand navigation pane contains several categories: 'Applications' (highlighted in red), 'Updates', 'Operating Systems', 'Installation status', 'Device compliance', and 'Options'. The main content area shows the details for the application 'LockDown Browser - install'. A red 'Install' button is prominently displayed. Below the button, the following information is listed: Status: Available, Version: 2.0.6.0, Date published: 7/1/2010, Restart required: No, Download size: 153 MB, Estimated time: Not specified, and Total components: 1. The breadcrumb navigation at the top of the main area reads 'Applications > Application details'.

